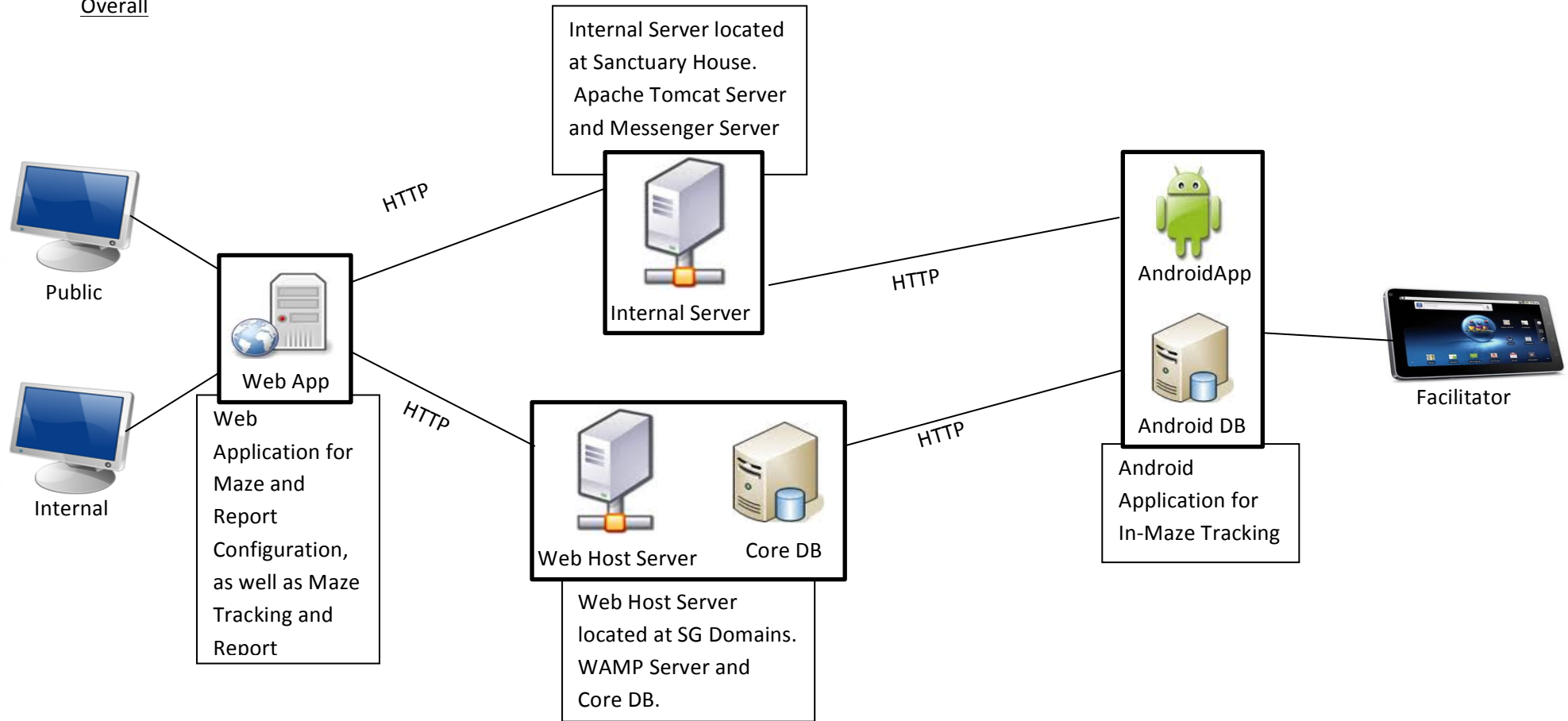
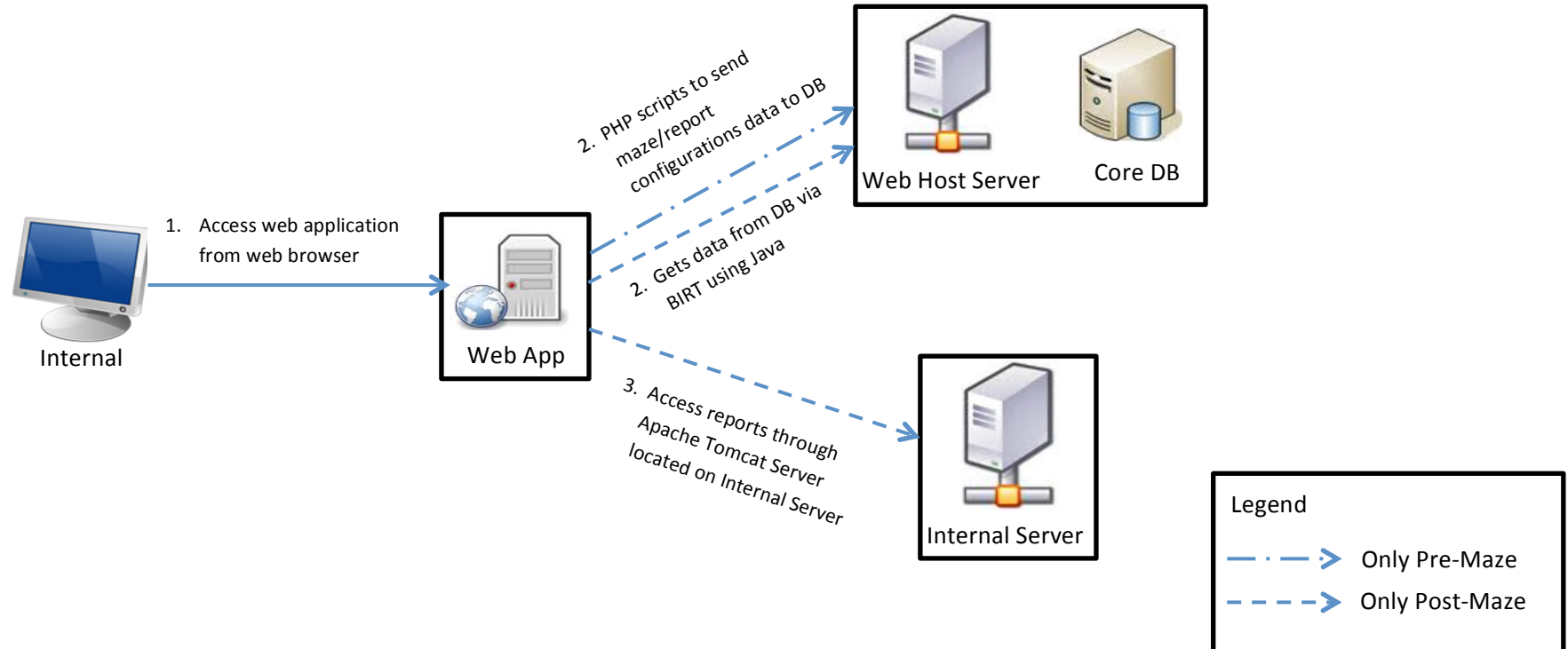


Overall



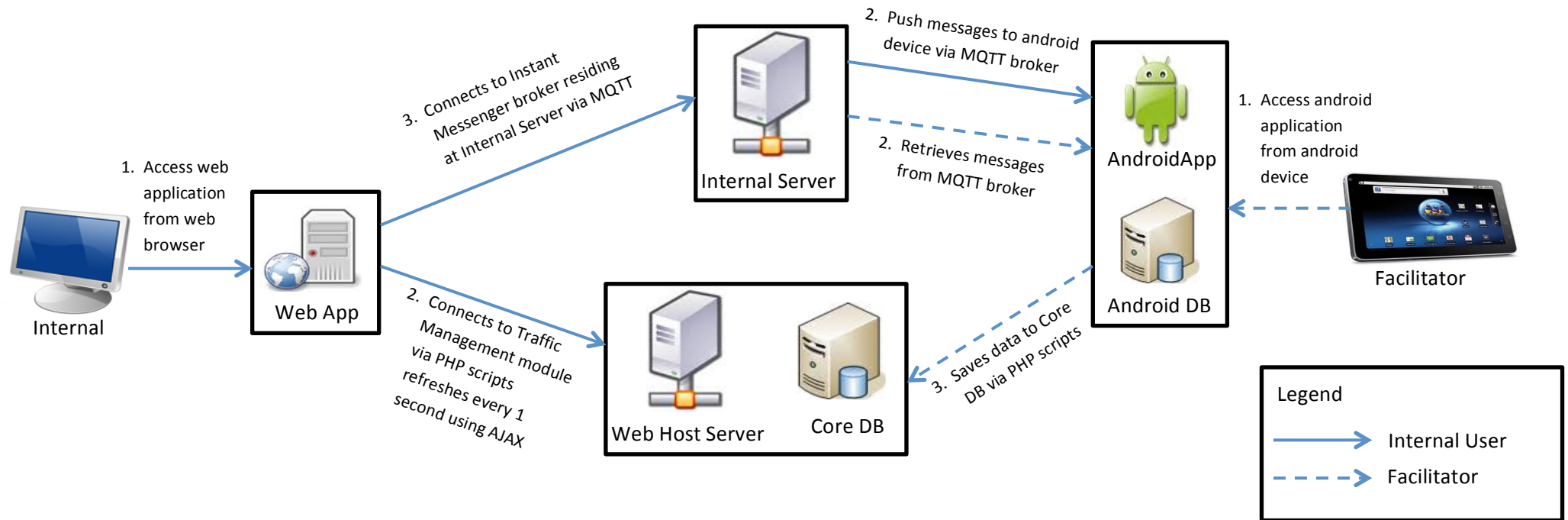
Pre/Post-Maze



Before the actual implementation of the maze, the internal users are able to access the web application to do configurations to the maze and report, by giving scores to questions used in the maze. The web application is connected to the web hosting server via PHP scripts. AJAX and JavaScript are also used to refresh pages with updated data from the DB, as well as perform validation checks respectively.

After a maze implementation, internal users are able to generate individual reports for individual student's progress within the maze, development reports for teachers or internal users for summary of the students' progress in the maze, as well as operation reports for the internal users to analyse maze operations. Reports are done using BIRT and Java to connect to the Apache Tomcat Server located in the Sanctuary House Internal Server, as well as BIRT and Java to connect to the core DB located at the web hosting domain.

In-Maze



During the maze implementation, the internal users are able to utilize the web application to monitor the traffic flow within the maze. This is connected to the web host server via PHP, AJAX and Javascript. The internal users are also able to send messages to facilitators within the maze by connecting to an internal server located in Sanctuary House, which is coded using PHP, AJAX and Javascript.

For the facilitators, they are able to utilize an Android Application to track the student's progress within the maze. Student progress is being sent to the core DB located at the web hosting domain via PHP and JSON. The facilitators are also able to send and receive messages from the internal users via a push function from the internal server. This is done via codes in PHP, JSON and Javascript.