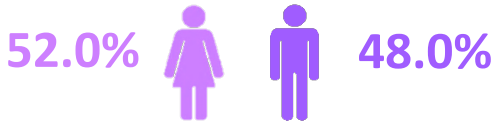




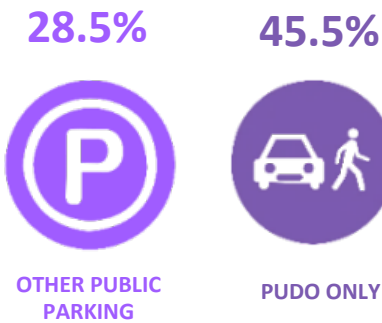
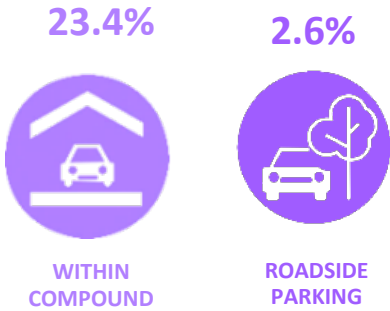
SURVEY FINDINGS

*Number of Survey interviews : 439



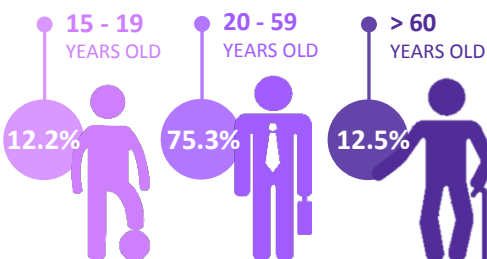
- ❖ **51.3%** visit the community center more than once a week.
- ❖ **29.7%** spend about 120 minutes at the community center.
- ❖ **44.1%** came alone.

WHERE DRIVERS PARKED



- ❖ **66.7%** walked less than 5 minute from where they parked

AGE GROUP



INFOGRAPHIC BY:

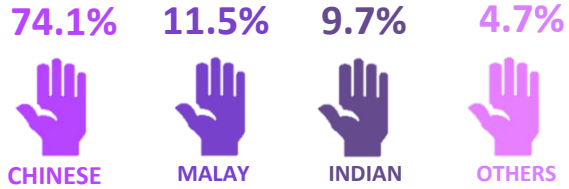


DATA BY:

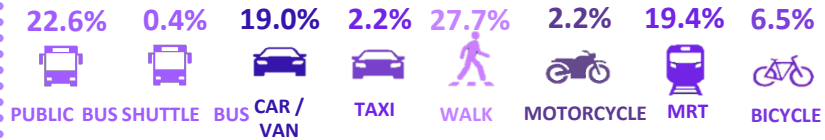


COMPILED ON:

7 JANUARY 2016

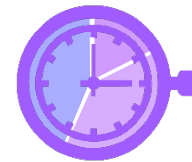


MODE OF TRANSPORT



JOURNEY TIME

< 30 MIN
95.7%



< 5 MIN
12.2%

< 20 MIN
89.6%

*Cumulative Figures

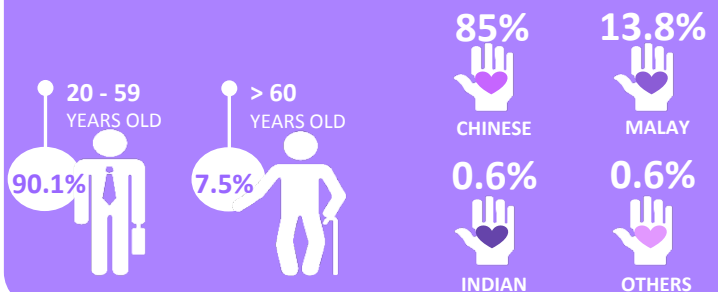
SINGAPORE CITIZENS & PERMANENT RESIDENTS

92.5%



OF THOSE WHO CAME BY MOTORISED MODES ...

- ❖ **32.5%** visit the community club more than once a week.
- ❖ 20.6% came alone.





SURVEY FINDINGS

*Number of Survey interviews : 439

INFOGRAPHIC BY:



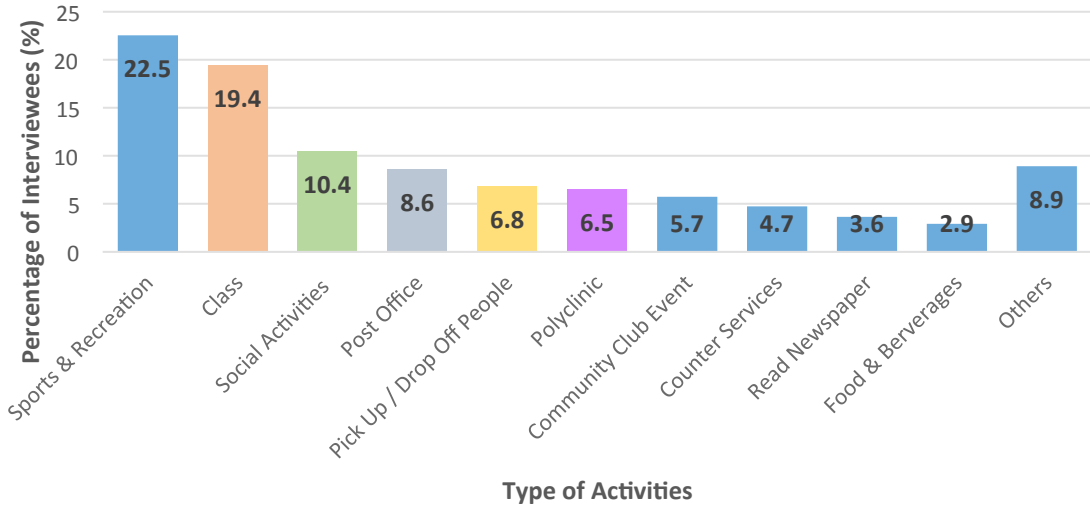
DATA BY:



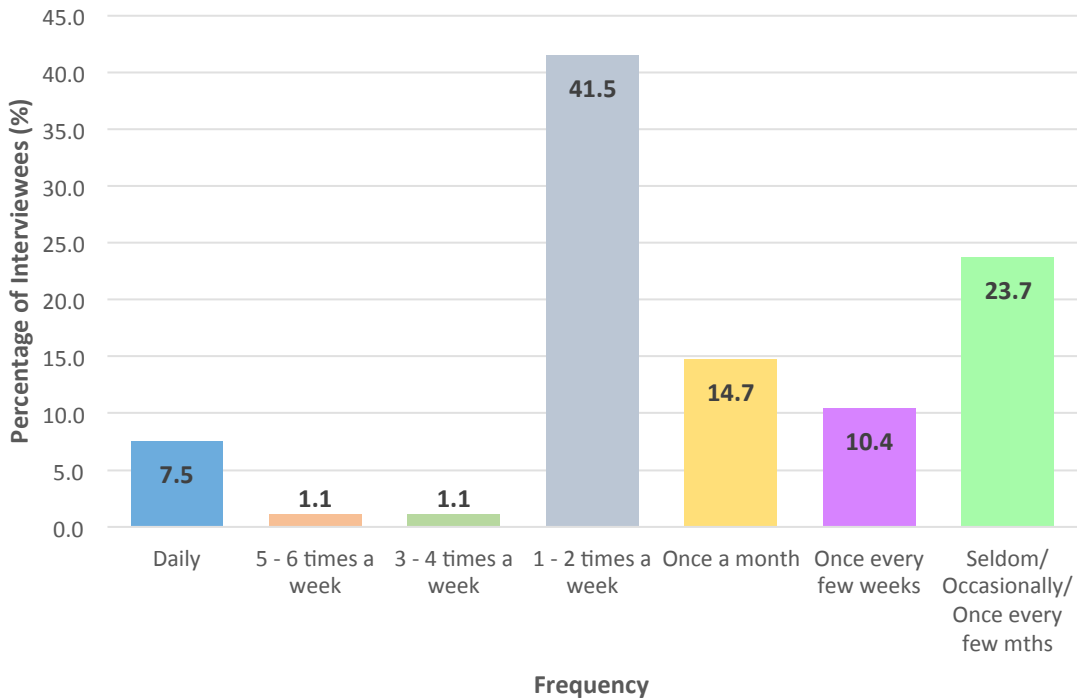
COMPILED ON:

7 JANUARY 2016

Main Purpose of Visit



Frequency of Visit





SURVEY FINDINGS

*Number of Survey interviews : 439

INFOGRAPHIC BY:



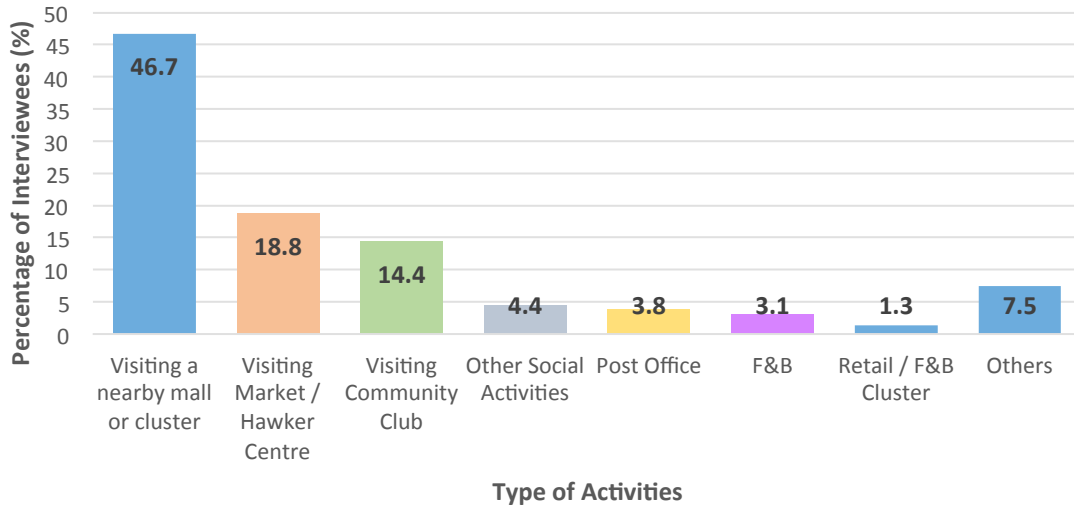
DATA BY:



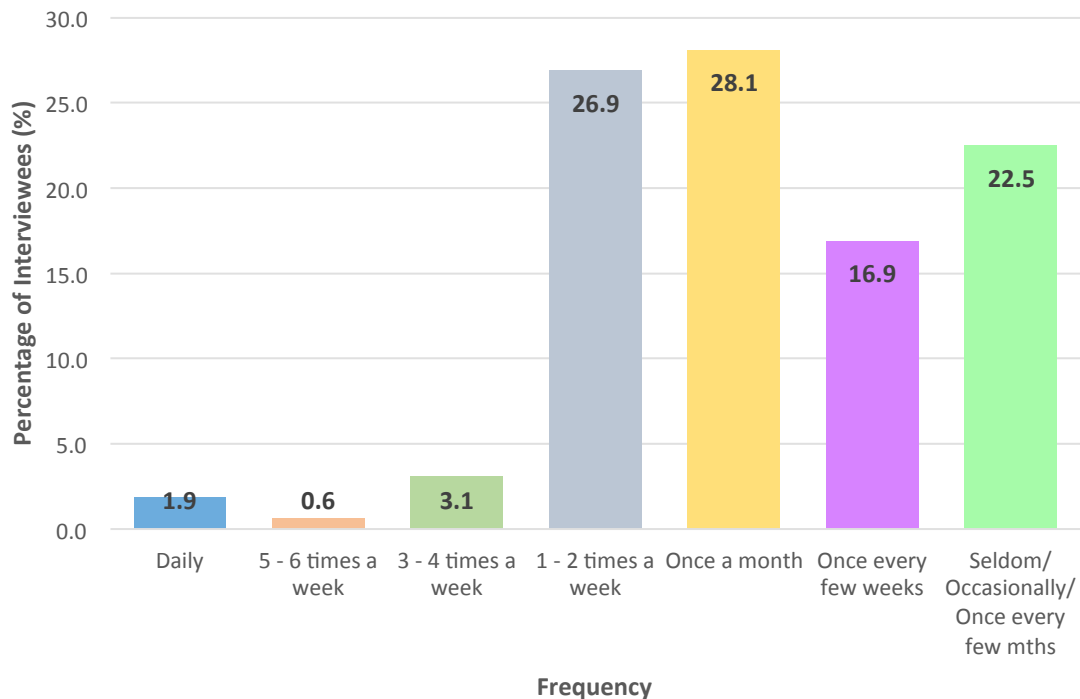
COMPILED ON:

7 JANUARY 2016

Main Purpose of Visit (Survey Conducted in Carpark)



Frequency of Visit (Survey Conducted in Carpark)





**PARKING OCCUPANCY
 PROFILE**

INFOGRAPHIC BY:



DATA BY:



COMPILED ON:

7 JANUARY 2016



SITEMAP

LEGEND FOR SITEMAP

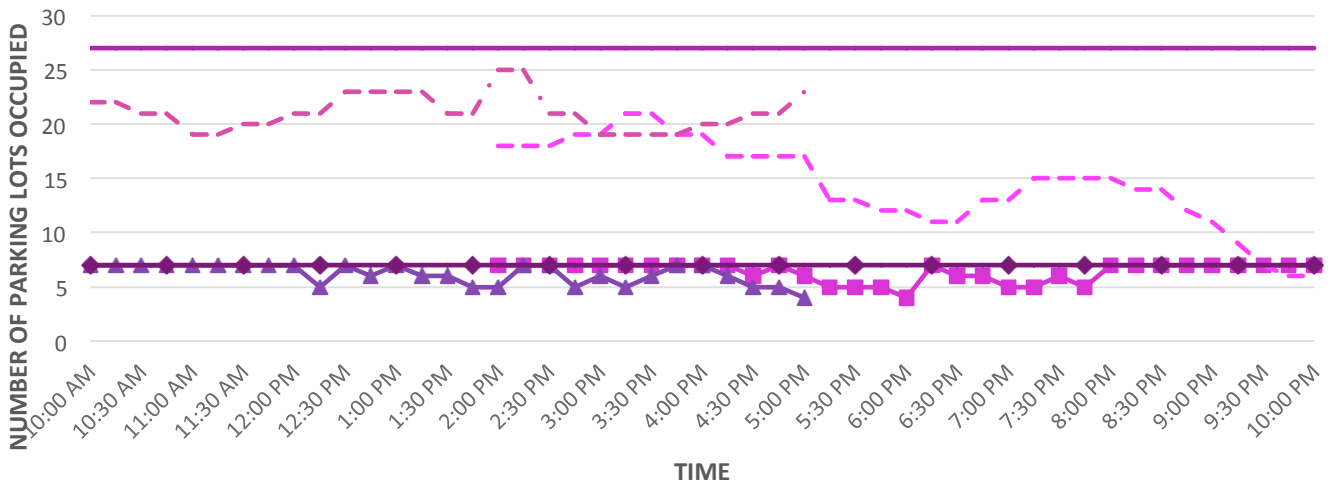
- Carpark Entrance / Exit
- Taxi Stand / PUDO
- Nearby Public Transport options within 300m
- Study Site
- Roadside parking
- Parking within development
- Parking near development
- Development Carpark
- MRT/LRT Station

DEVELOPMENT PARKING CHARGES

Cars
Monday to Sunday
7.00am – 10pm
 \$0.20 per 10 minutes



Development Carpark Car Occupancy



- Weekday Public Lots Car Occupancy
- Weekend Public Lots Car Occupancy
- Weekday Reserved Lots Car Occupancy
- Weekend Reserved Lots Car Occupancy
- Maximum Public Lots Car Occupancy
- Maximum Reserved Lots Car Occupancy



**PARKING OCCUPANCY
 P R O F I L E**

INFOGRAPHIC BY:



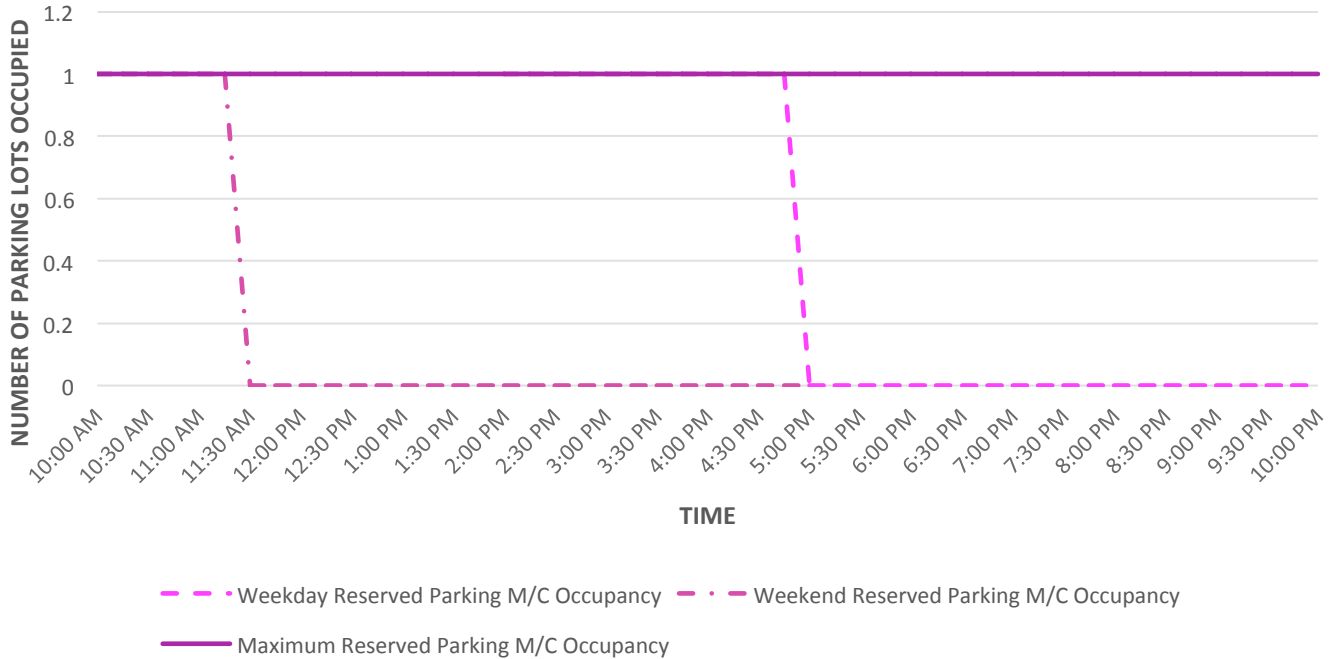
DATA BY:



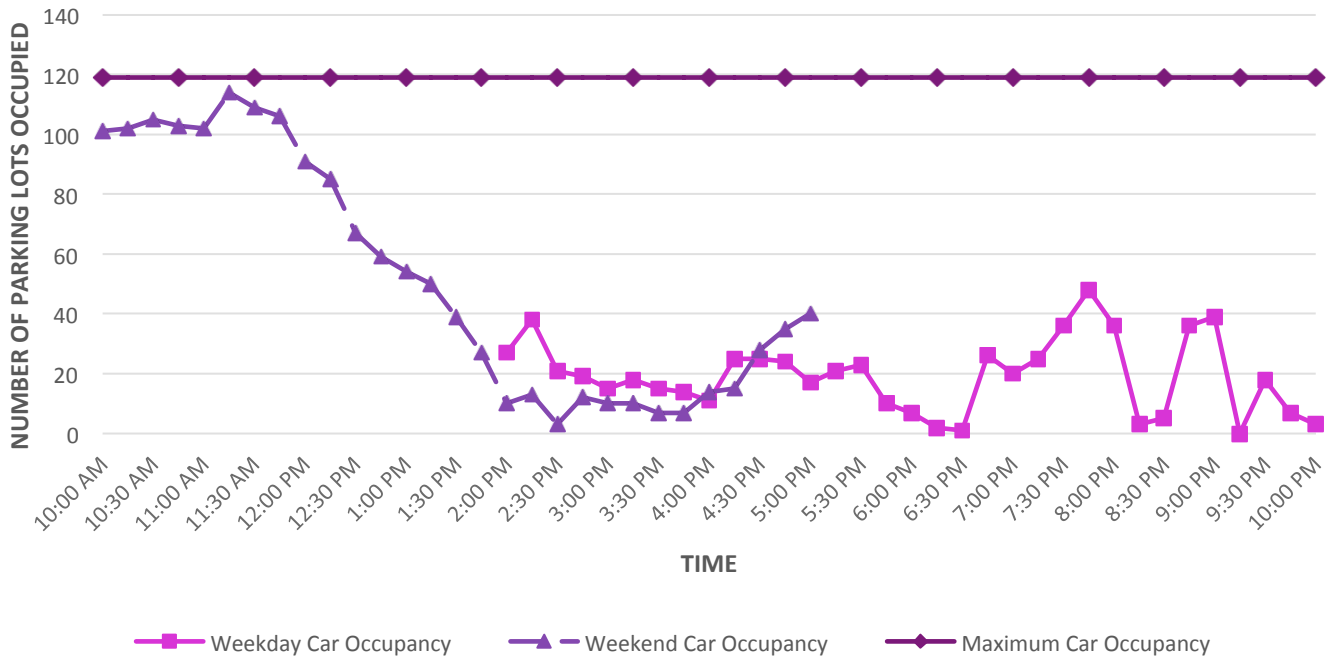
COMPILED ON:

7 JANUARY 2016

Development Carpark M/C Occupancy



Public Carpark (Kopitiam Square) Car Occupancy





**PARKING OCCUPANCY
 PROFILE**

INFOGRAPHIC BY:



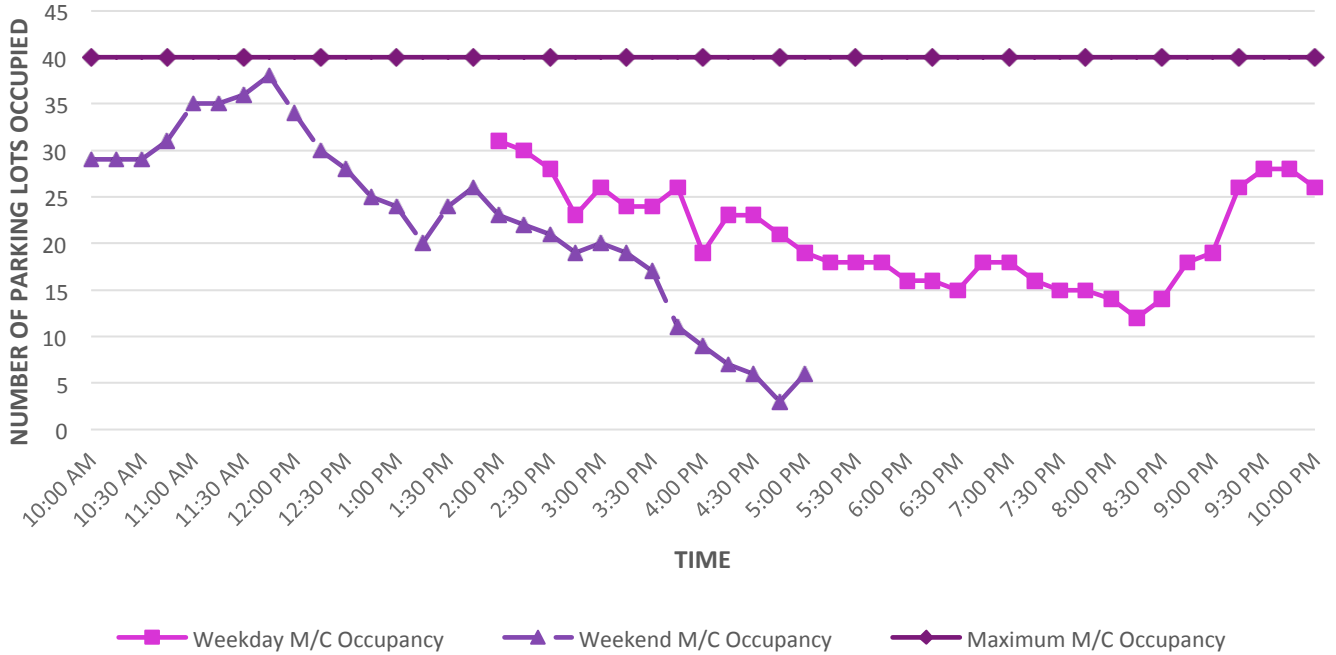
DATA BY:



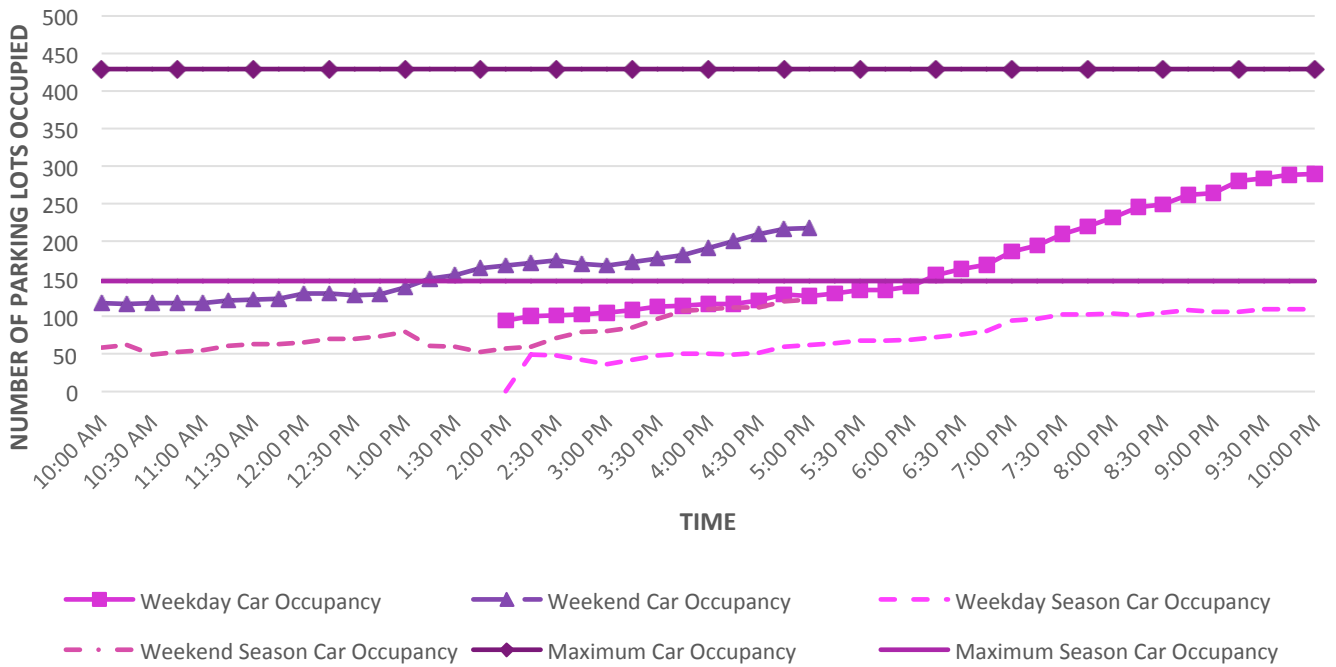
COMPILED ON:

7 JANUARY 2016

Public Carpark (Kopitiam Square) M/C Occupancy



Public Carpark (SK50) Car Occupancy





**PARKING OCCUPANCY
 P R O F I L E**

INFOGRAPHIC BY:



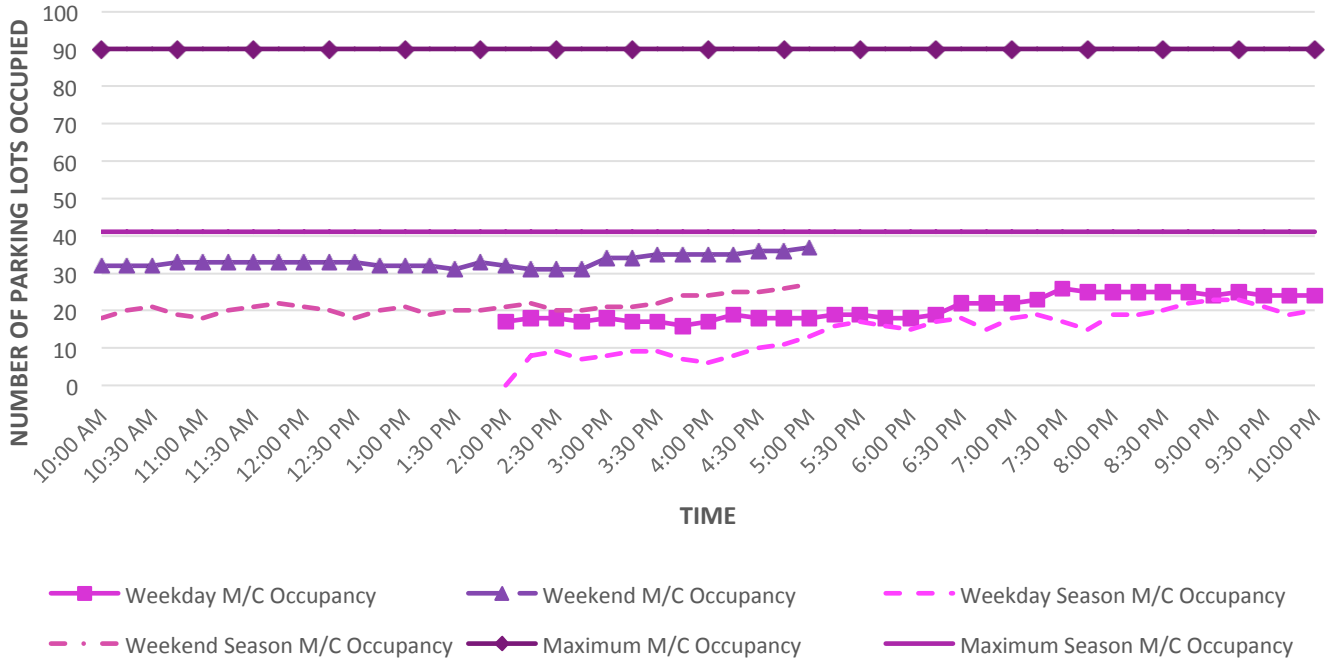
DATA BY:



COMPILED ON:

7 JANUARY 2016

Public Carpark (SK50) M/C Occupancy





**F O O T F A L L
 P R O F I L E**

INFOGRAPHIC BY:

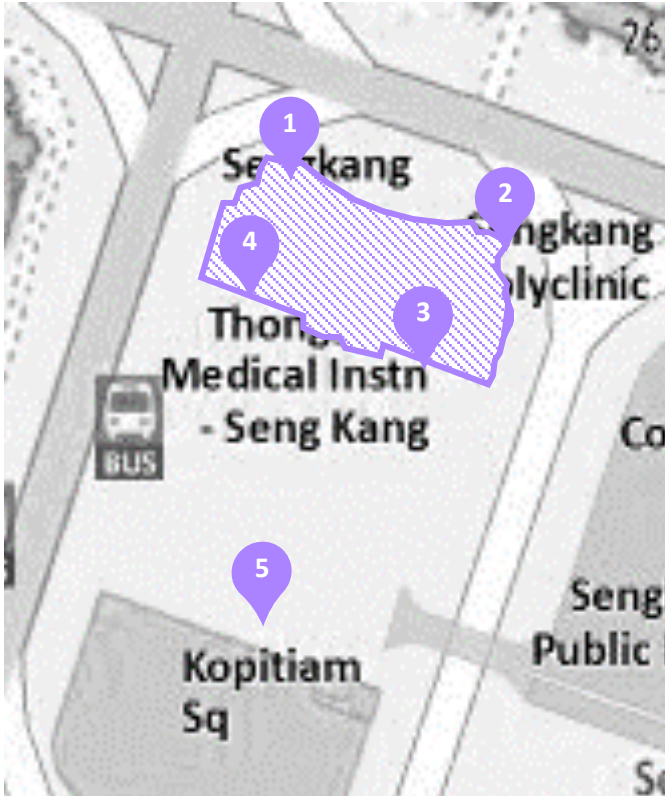


DATA BY:



COMPILED ON:

7 JANUARY 2016



SITEMAP

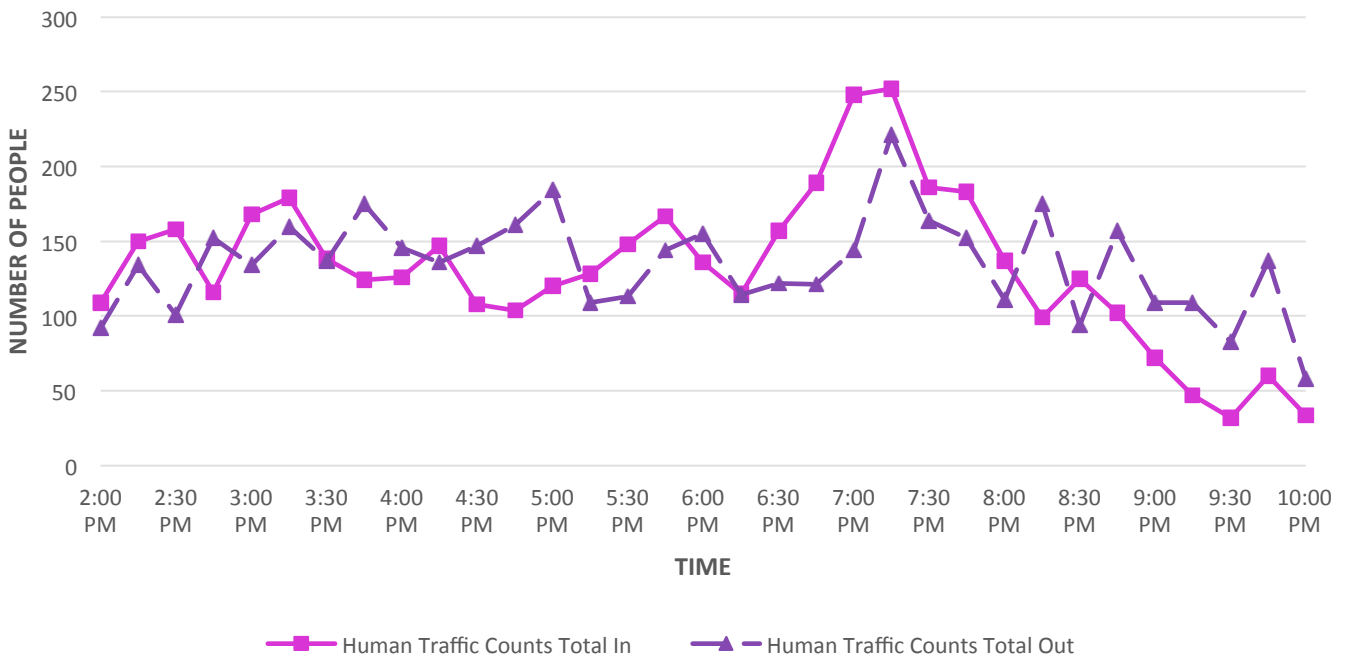
Approx GFA: 3000 *m*²

LIST OF TENANTS

- SingHealth Polyclinic
- Sengkang Community Club
- Punggol Central Constituency Office
- Neighbourhood Police Post
- Singapore Post
- Yamaha Music
- Thong Chai Medical Institution

- Singapore Anti-Narcotics Association
- 1 Pedestrian access to Police Post and CC from Sengkang East Way
- 2 Pedestrian access to Polyclinic and CC from Compass Point
- 3 Entrance to the CC from slip road development carpark
- 4 Entrance to the CC from the slip road development carpark
- 5 Sports area managed by CC

Weekday Total Human In and Out





F O O T B A L L P R O F I L E

INFOGRAPHIC BY:



DATA BY:



COMPILED ON:

7 JANUARY 2016

Weekend Total Human In and Out

