

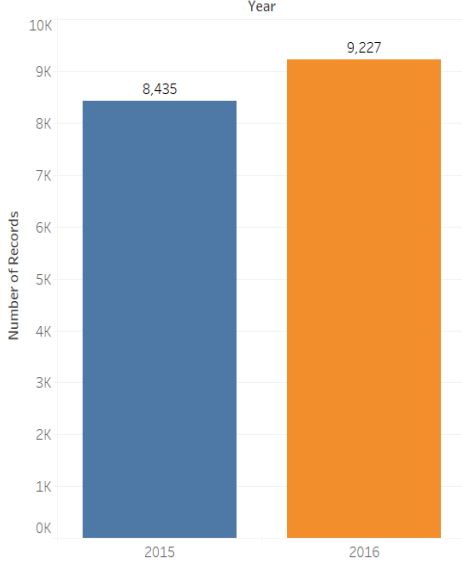
# COOLING MEASURES

*in the resale public housing market*

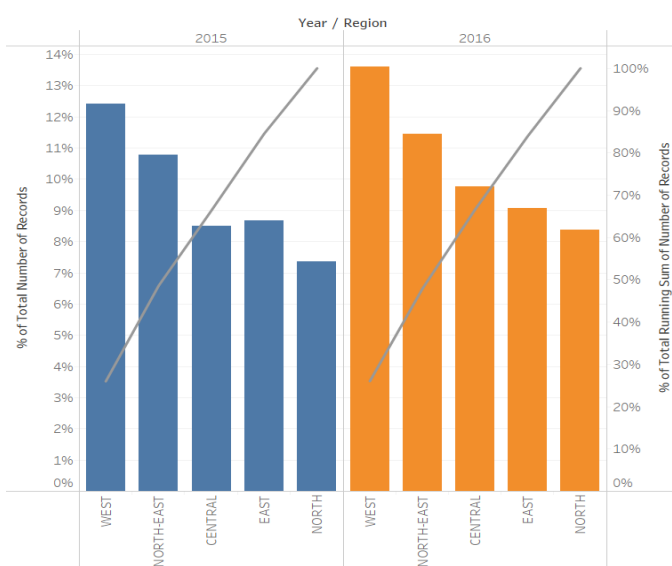
In 2013, in order to cool the property market, the government has made changes in the housing policies. Although housing prices are expected to drop significantly, while supply is expected to remain constant, the expected phenomenon has not occurred. Instead, housing prices have remained flat, while supply has increased slightly in 2015 and 2016.

## Supply

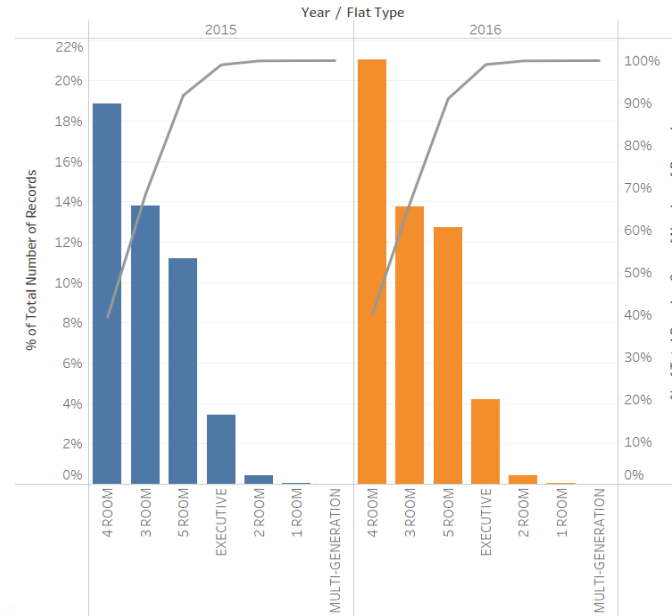
Supply of Flats



% of Total Supply of Flats by Region



% of Total Supply of Flats by Flat Types

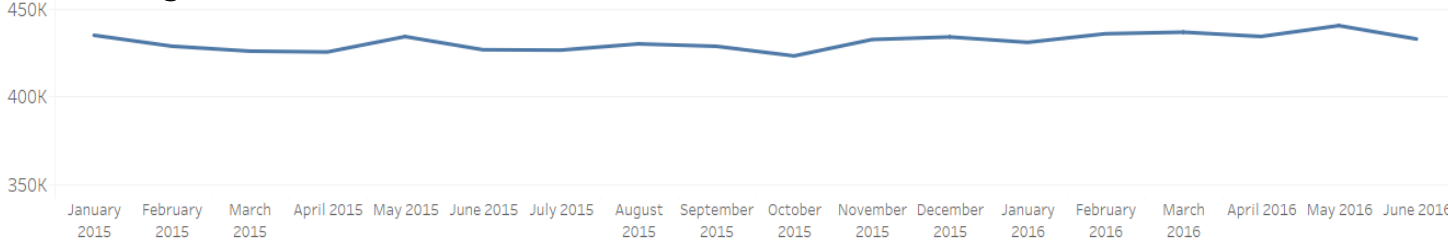


Supply of Flats by Region/ Town

Region	Town	Year	
		2015	2016
CENTRAL	BUKIT MERAH	■	■
	KALLANG/WHAMPOA	■	■
	TOA PAYOH	■	■
	GEYLANG	■	■
	QUEENSTOWN	■	■
	BISHAN	■	■
	CENTRAL AREA	■	■
	MARINE PARADE	■	■
	BUKIT TIMAH	■	■
EAST	TAMPINES	■	■
	BEDOK	■	■
	PASIR RIS	■	■
NORTH	WOODLANDS	■	■
	YISHUN	■	■
	SEMBAWANG	■	■
NORTH-EAST	SENGKANG	■	■
	HOUANG	■	■
	ANG MO KIO	■	■
	PUNGGOL	■	■
	SERANGOON	■	■
WEST	JURONG WEST	■	■
	CHOA CHU KANG	■	■
	BUKIT BATOK	■	■
	BUKIT PANJANG	■	■
	CLEMENTI	■	■
	JURONG EAST	■	■

## Prices

Average Transaction Price



Resale Price Per Region

