



User Guide

IS 428 Visual Analytics for Business Intelligence

Wang Ziteng

Wu Wei

Manas Mohapatra

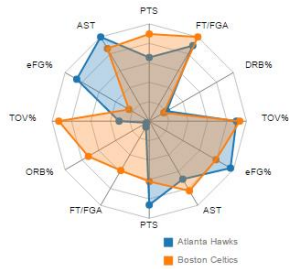


Team Performance

INSTANT

Offensive Ability Chart

Select example: Atlanta



For team performance, you can choose the team you want at the drop menu at the top and then see what is the level of the team's performance in each data field.

Home About Works

Configuration Parameters

Width: Height:

Levels:

Padding Scale:

Label Scale:

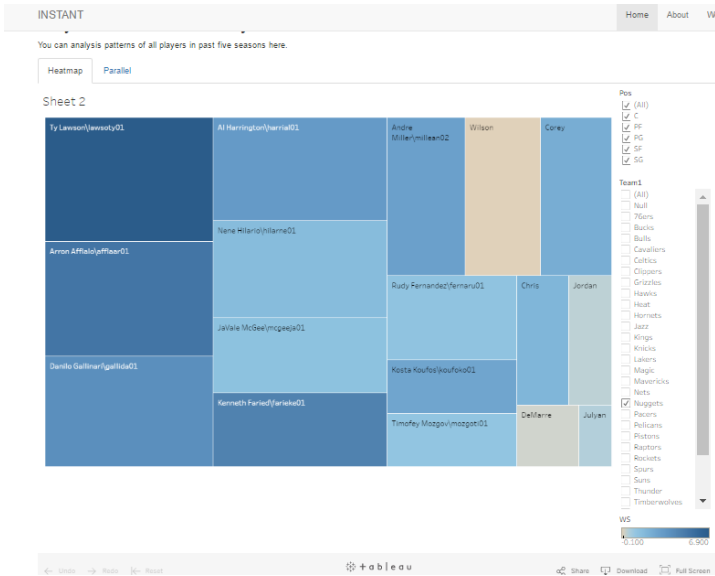
- Facet Plot
- Levels
- Axes
- Vertices
- Polygons
- Legend
- Levels Labels
- Axes Labels

(NOTE: Not all configuration options are shown, refer to [README.md](#) or [radarDraw.js](#) for more details)

Also, you can use these options to adjust the glyph. For example, you can change the width and height of the glyph.

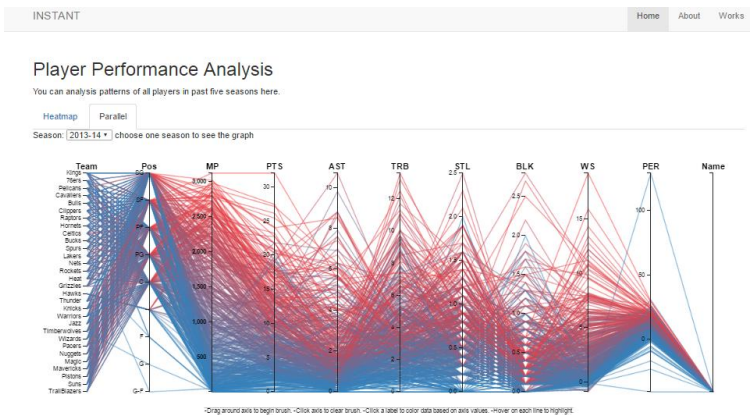
Player Performance

For player performance analysis, we have two interactive graphs.



You can see players' offensive and defensive performance here. The size of the square represents the average scores of the player and the color represents player's defensive win share which means player's contribution to defence.

Also, you can use the filter at the right side. You choose different season and different team to filter players as you want.



This parallel coordinates shows the detail data for each player. At the top, you can choose the season. Then there are two ways to use this graph. First, you can brush the team at the first axis, then players in that team will be highlighted. Another way to use this graph is that you can brush the range you want at each axis and see the players with the features you want.