

# INTERACTIVE STORYBOARD USER GUIDE

This document will allow you to get started on opening the Storyboard, and interacting with the visualisations inside it.

Done by LIM Hui Ting and Jonathan Eduard LIM

By Forensic Ninja

# GASTech Interactive Storyboard by Forensic Ninja: User Guide

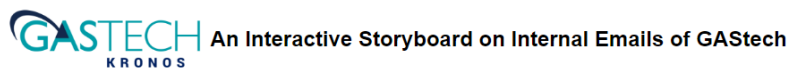
To open this Visualisation, you may need to have access to the following:

Github website: <url>

- OR -

Local web (ie. easyPHP 14.9) and opening the .html file through “localweb”, not by clicking the file directly

Once the HTML file is open, you will see this page:



## A Brief Introduction to Forensic Ninja Tool

This storyboard allows users to explore how Gastech Employees interact through their email in a span of 2 weeks.

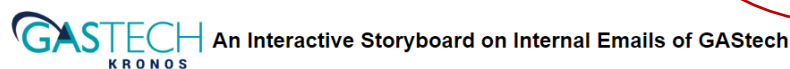
The storyboard consists of two dashboards namely:

1. Graph visualisation which consists of a Force Directed Graph to show the email interactions among the employees
2. Concept map which analyse the keywords of interest from the subject headers of the employees' emails

For best user experience, view the visualisation using a Chrome browser at zoom level of 90%.



This is the homepage of the site. This page will tell you about the background of the work we have done and also what you will see in the next tabs.



## A Brief Introduction to Forensic Ninja Tool

This storyboard allows users to explore how Gastech Employees interact through their email in a span of 2 weeks.

The storyboard consists of two dashboards namely:

1. Graph visualisation which consists of a Force Directed Graph to show the email interactions among the employees
2. Concept map which analyse the keywords of interest from the subject headers of the employees' emails

For best user experience, view the visualisation using a Chrome browser at zoom level of 90%.



Those that are inside the circle are the tabs. Click on them to see the visualisations we have made. In these site, there are 2 visualisations, namely:

1. Graph Visualisation of the Email sent by GASTech employees
2. Concept map that displays the name of the employee and what their email headers contain.

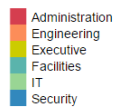
By Clicking on to the “Graph Visualisation” Button, it will bring you to the first Visualisation -

## Graph Visualisation: Email exchanges based on Email Sender

This visualisation shows the interaction among the employees based on their email conversations. The nodes (in circle) represent the individual employees of GASTech while the edges (lines) represent to whom the particular employee has sent the email to. The nodes are colour coded to represent the different departments that the particular employee belongs to. The legend for the colours can be found at the left handside of the graph.

### Directions:

1. Hover your mouse over the nodes to see the email interaction.



There is a short description about this page on the top part of the screen.

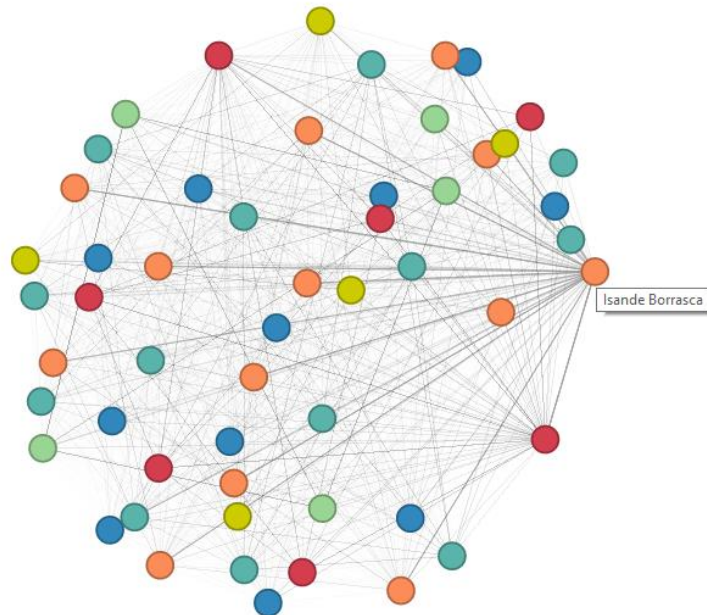
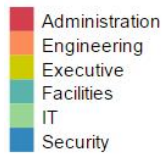
These page has a few features:

1. There is a legend in the left hand side of the screen. This legend informs the user about the 6 different department in GASTech and they are colour coded.
2. In the middle of the screen is the actual visualization itself. This is a Force Directed Graph, and it is draggable.

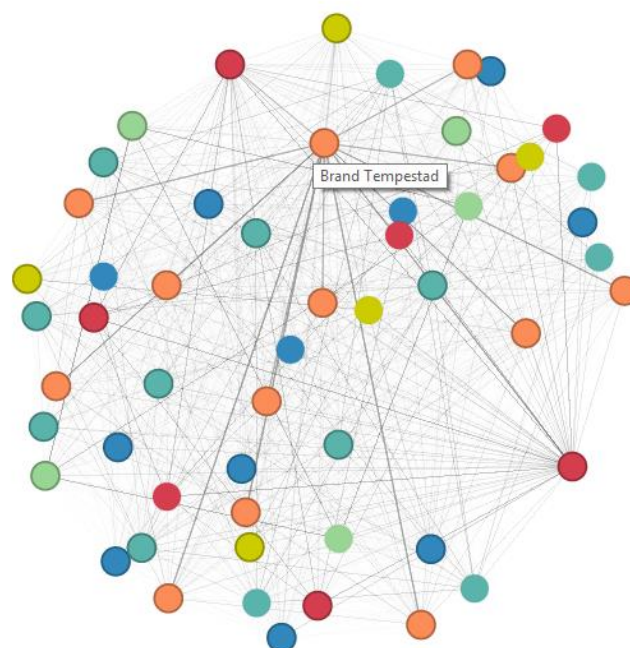
## GASTech Interactive Storyboard by Forensic Ninja: User Guide

### Visualisation Features:

1. When there is a mouse hover on a node, 2 things will happen.
  - a. The employee's name in the node will appear



- b. Those with an immediate connection with the node will appear, and the rest of the other nodes without a connection will not .



# GASTech Interactive Storyboard by Forensic Ninja: User Guide

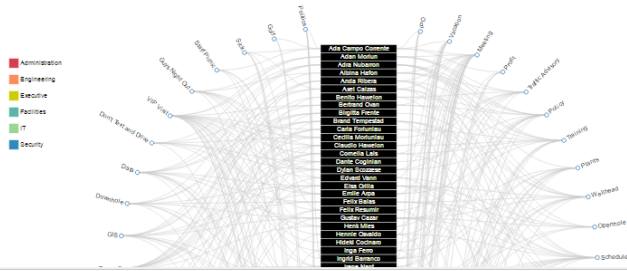
Lastly, click on the Concept Map tab. This page will appear upon clicking the node:

## Concept Map

The concept map illustrates the relationship between the keywords of interest identified in the email headers and the employees. The inner node (i.e. rectangle) represents the individual employees of GASTech. The inner nodes are colour-coded upon mouseover which represents the different departments that the particular employee is in. The outer nodes (i.e. words) represent the keywords that are work and non-work related content identified from the email headers.

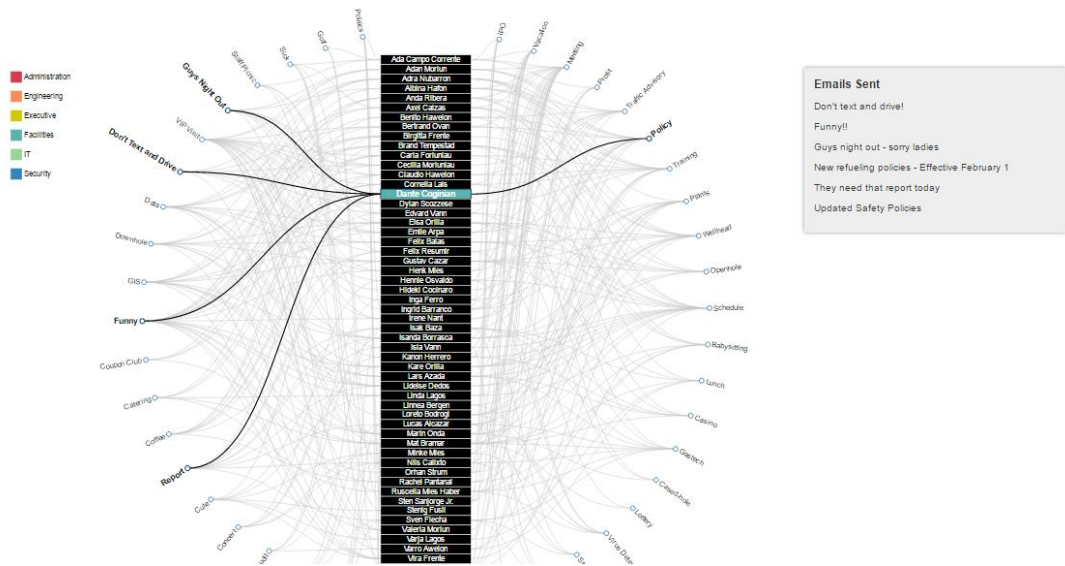
**Directions:**

1. Hover your mouse over the employee names to see which department the employee is from
2. Hover your mouse over the employee names to see the keywords used in the email headers by the employee
3. Hover your mouse over the employee name to see the actual email headers used in the emails sent
4. Hover your mouse over the keywords to see the employees who have engaged in similar conversations



This concept map is the last visualization for this page. There is a short description of what the Visualisation is about, with instructions how to operate it.

1. Hover your mouse over the employee names to see which department the employee is from

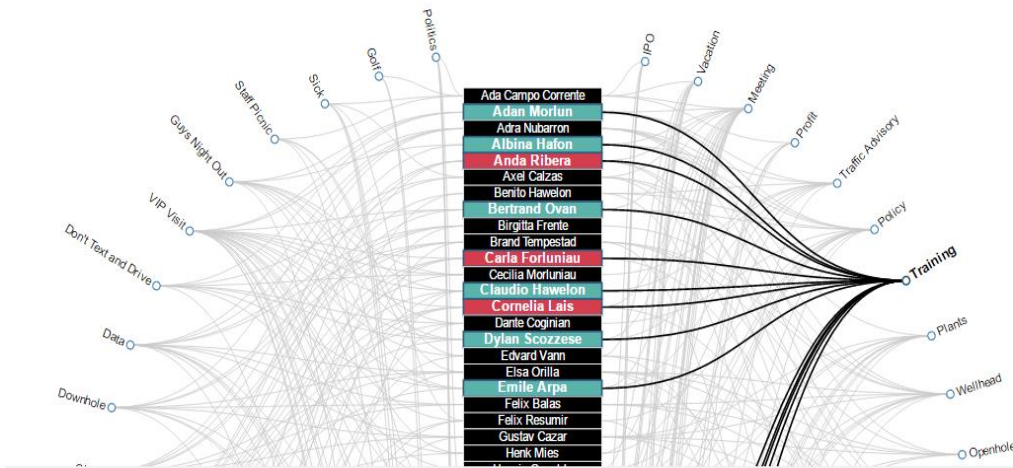


You will see the department that a particular employee is from by hovering onto the rectangular list with the employees' names. Once the mouse is hovered, a corresponding colour will come out, which will show the department the employee belongs to. The legend is on the left hand side for easy reference.

2. Hover your mouse over the employee names to see the keywords used in the email headers by the employee

## GASTech Interactive Storyboard by Forensic Ninja: User Guide

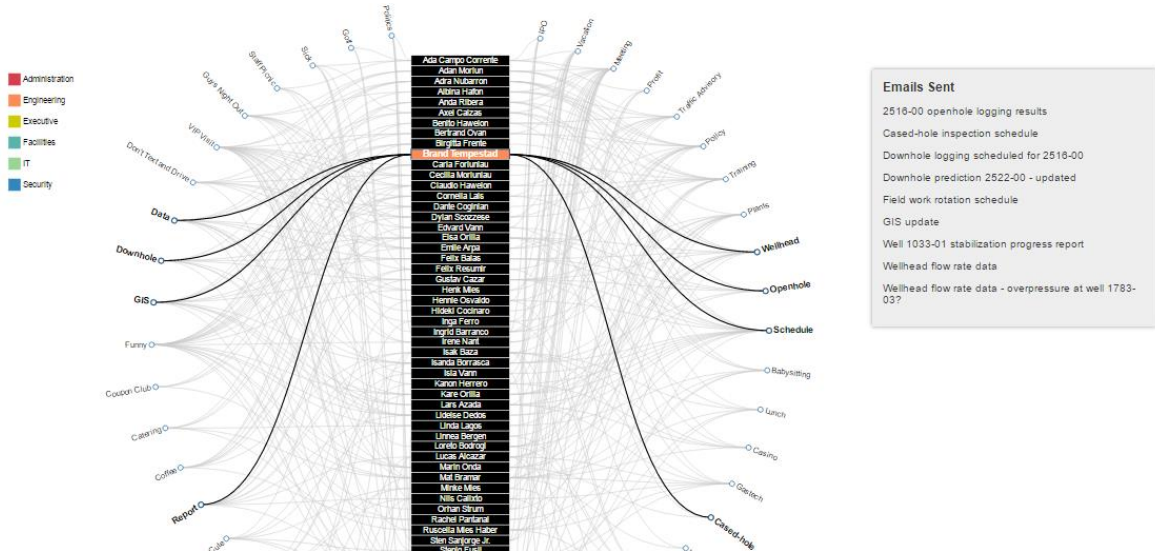
Once you select an employee's name or the small circle in the outer circle, in, you will see a link going from the rectangle to the outer circle. The outer circle are the keywords that particular employee used in his/her emails.



As seen from the photo, if training is selected, you will see the corresponding employees who used "Training" as a word in their emails.

3. Hover your mouse over the employee name to see the actual email headers used in the emails sent

Upon clicking on the employee's names on the rectangular list of names, a tooltip will appear. This tooltip lists all the emails subject headers that an employee wrote.

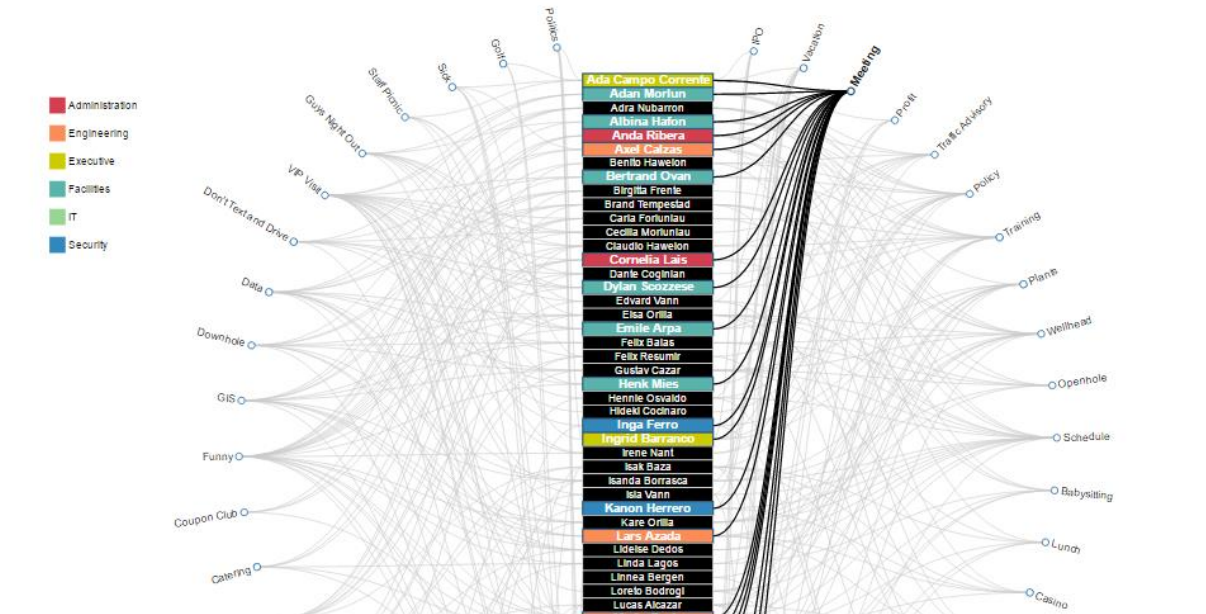


A tooltip appeared on the right hand side, displaying all the email subject headers that this employee sent.

## GASTech Interactive Storyboard by Forensic Ninja: User Guide

4. Hover your mouse over the keywords to see the employees who have engaged in similar conversations

By hovering onto the key words on the outer circle, the user will find out which employees engaged in similar conversations through emails.



By clicking onto the word “Meeting”, we can now see which employees engaged in conversation through email regarding the subject “meeting”.